

TRUECLAIM EXPLORATION INC.

NEWS RELEASE

JANUARY 8, 2010

SYMBOL: TSX-VENTURE: TRM

Trueclaim Exploration Inc. Announces Preliminary Results from its Phase I Scadding Drill Program

St. Thomas, Ontario - Trueclaim Exploration Inc. (TSX-VENTURE:TRM) (the "Company") an explorer and developer of precious metals, is pleased to announce the results from its recent Phase I drill program at its Scadding Gold Property near Sudbury, Ontario, under option to the Company. Of particular note was the intersection of 47.59 grams per tonne of gold over one metre in hole number TRM-09-13. The former Scadding mine has encountered previous high grade gold values, particularly in the initial discovery of the East-West zone where high-grade intercepts were subsequently mined. The new result from TRM-09-13 was one of a series of intersections in a program that consisted of nineteen (19) holes for a total of 2,117 metres carried out in November and December, 2009. Partial fire assay results to date represent 1,716 metres of the total 2,117 metres that were drilled. Full metallic assays are ongoing on selected portions of the core, and further fire assays will also be forthcoming from holes 2, 7, 18 & 19.

In outlining the results John Carter, the President of Trueclaim began by noting "the Phase I program was designed to accomplish three main goals: to confirm the presence of historical non-compliant NI 43-101 gold occurrences as reported in previous reports of drill programs undertaken by others; outline the mineralized zones suggested in previous non-compliant NI 43-101 reports; and develop a better understanding of this mineralization. In multiple areas the results exceeded our expectations".

Preliminary Results

In three of the first four holes evaluated to date by the geologic team, comprised of Mr. Bob Komarechka, P.Geo. and Ms. Lindsay Moss, B.Sc.Geo., visible gold mineralization was identified. "This type of physical result is very encouraging" noted Mr. Carter, "and we are eager to complete our full assessment due to the significant impact it could have on the confirmation of a Scadding gold resource". The entire core drilled to date, including the sections with visible mineralization, have now been logged by the Company's geological team, with sampled intervals sawed and sent to the assay lab. Seventeen (17) of the nineteen (19) holes were drilled to explore and outline the targeted mineralized chloritic breccia. These seventeen holes intercepted the targeted chlorite breccia. The table below provides a brief summary of the more significant partial assay results received to date from the drill program.

Hole ID ¹	From (m) ²	To (m)	Interval (m)	Au (g/t) ³	Zone
TRM-09-01	50.00	51.00	1.00	6.76	South
TRM-09-02	28.59	29.29	0.70	2.30	South
TRM-09-02	42.00	42.50	0.50	13.27	
TRM-09-03	89.00	89.88	0.88	3.22	North
TRM-09-03	99.00	100.00	1.00	2.67	
TRM-09-03	100.00	101.00	1.00	3.70	
TRM-09-04	85.55	86.00	0.45	4.28	North
TRM-09-04	86.00	86.70	0.70	8.78	
TRM-09-05	89.40	89.90	0.50	4.30	North
TRM-09-06	69.12	70.00	0.88	27.90	North
TRM-09-13	66.00	67.00	1.00	47.59	Central

- 1. The data shown in the preceding table represent a partial preliminary set of results for the Phase I program. The results from all drill holes will be provided in a subsequent press release and will also be available on the Company's website, www.trueclaim.ca.*
- 2. The gold mineralization occurring in the project area displays an erratic distribution in size, with localized areas of coarse gold. Further work is required to understand the gold mineralization and distribution potential in the area.*
- 3. Due to the preliminary nature of this program and the uncertainty of the orientation of the mineralized brecciated zone, the above intersections may or may not represent the true width of mineralization. Core with visible mineralization was cut in a representative manner; in areas of visible mineralization located on one side of the core, the side of the core with no visible mineralization was sent for assay. All assays are uncut, length-weighted average values.*

The Company's goal now is to continue to examine each subsequent hole and report on similar data as it becomes available. In the coming weeks the Company will continue to evaluate all intersections and perform metallic assays on values of interest. Metallic assays provide additional information and value that might go otherwise undetected in normal screening. For example, the fire assay result from the 22 to 23 metre interval from hole 10 was 1.789 grams per tonne, however, the metallic screen analysis showed 37.47 grams per tonne retained on the screen. When combined in a weighted average with the material passing through the screen this resulted in a twofold increase in the metallic assay value of 3.648 grams per tonne compared to the standard fire assay value.

Zone Mineralization

In addition to encountering gold mineralization and the reported intersections, the results to date also suggests that the mineralization may have continuity between all five zones drilled (North, South, Central, East-West, and New - see enclosed map) as disclosed in previous press releases. The Company is encouraged by these preliminary initial results. The Company's project geologist Mr. Bob Komarechka, P.Geol. stated that "in preparation for compilation of the data the Company recently began working with Surpac, a three-dimensional modelling software package. As the Phase I assays are completed we will be plotting the data in our three dimensional model. This should permit us to visualize a much better concept for the potential continuity between the zones, as well as additional information on the depth of the mineralization. Given that none of the drill holes exceeded approximately 100 vertical metres we think the new model will also give us information as to whether the mineralization can be open at depth in some areas. One of our goals in Phase II will be to drill deeper to determine an open-at-depth potential".

Additional Drilling

The Company indicated that it is satisfied enough with these preliminary results to expand the Phase I program in mid-January, 2010 with several additional drill targets outside the five main zones. Although funding for these additional targets is in place, the specific drill program has not yet been determined. Following the additional drilling in January the Company will begin preparation work on the more extensive Phase II program on Scadding. This next phase will be designed to proceed in a logical fashion taking into consideration information acquired in the 3D visualizations, weather, drill availability and corporate development plans.

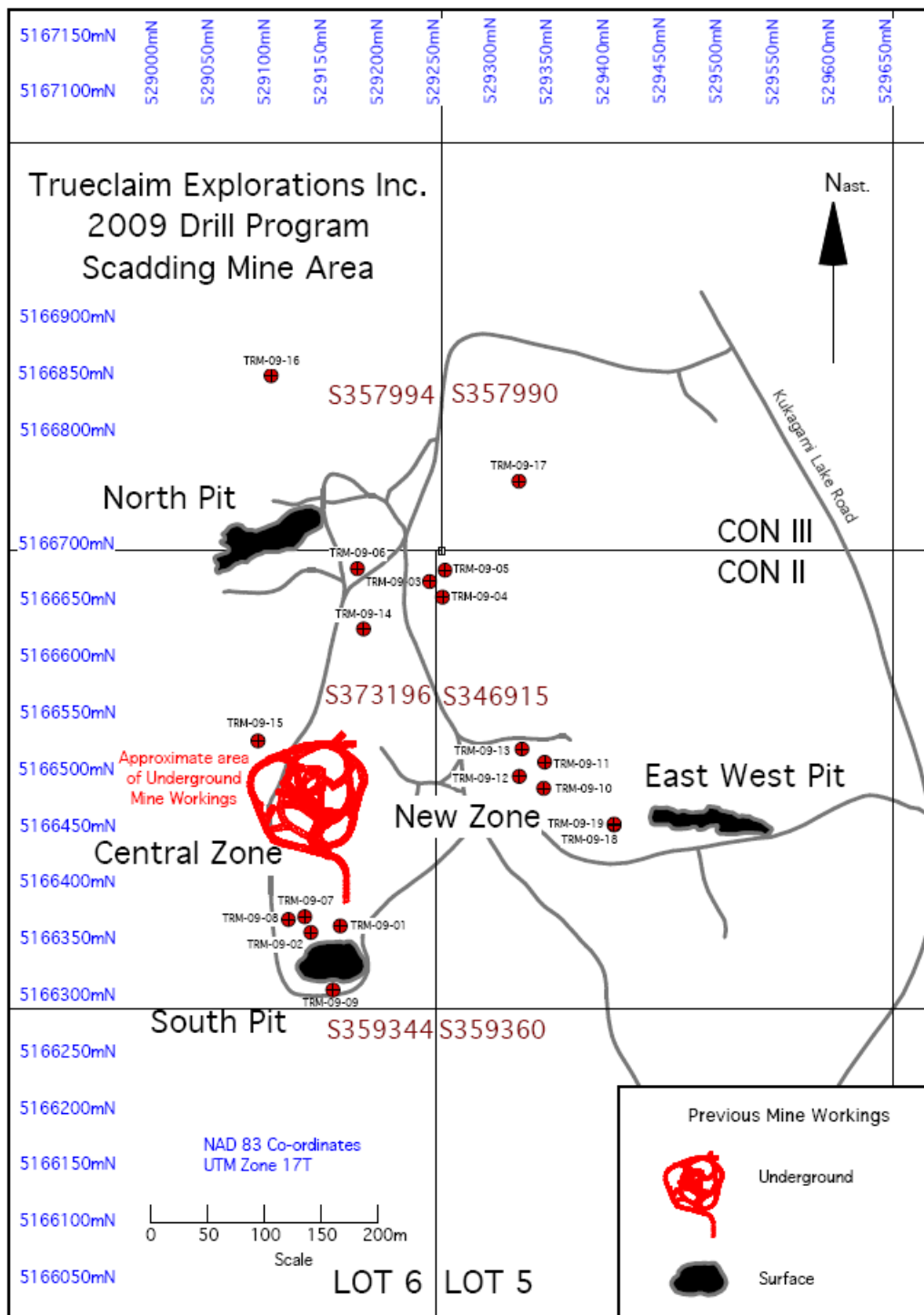
In a closing statement Mr. Carter indicated that "it is important to note that our Phase I program of 19 drill holes was focused on only sixty (60) acres of the approximately 36,525 acres that Trueclaim controls in the Scadding area. This larger area includes other past producing areas and targets of interest. The Company plans to apply leading edge technology such as portable X-ray Fluorescent (XRF) equipment. This equipment can detect gold pathfinder elements in the concentrations observed to provide fast efficient analysis of those targets in the field. As Mr. Komarechka has stated that our goals in Phase II will be to confirm the zone to zone continuity of mineralization; investigate the potential for the historic mined mineralization to be open at depth; and investigate this type of geology across the broader area. The combination of gold mineralization, encouraging assay results and the pervasiveness of chlorite brecciation through all the targeted zones should provide strong support for completing our three-dimensional modelling and commencing work on Phase II at Scadding".

Geologic Environment

The former Scadding gold mine is located in rocks of Huronian stratigraphy, consisting of the Espanola and Serpent formation. The gold mineralization in this environment is most likely associated with a hydrothermal chloritic breccia. The breccia occurs more or less within a strataformed horizon within the lower Serpent formation. The gold mineralization occurring in the area suggests an erratic distribution in size with localized areas of potential coarse gold.

Phase I Drill Target Map and Past Workings

The map below outlines the location of the 19 drill holes completed during the Phase I program, as well as the location of past workings on the former Scadding gold mine. This information as well as all results from the Phase I program will be posted on the Company's website at www.trueclaim.ca.



Plan of Trueclaim Phase 1 Drill Program as of Dec. 31, 2009 Scadding Township.

Quality Assurance

Trueclaim has implemented a rigorous quality assurance/quality control program at the Scadding property using best industry practices and supervised by Mr. Komarechka. The program includes: chain of custody of samples from drill to laboratory. Drill core is sawed in half at the property and for each sample half of the core from 0.5 to 1.5 metre intervals is placed in plastic bags with its labeled water resistant tag and sealed. Standard samples of a similar style gold ore of various grades supplied by an outside independent laboratory or blank samples are inserted into the sample stream every tenth sample. Samples, including the blind blanks and standards, are personally delivered by Mr. Komarechka to AGAT Laboratories prep Lab in Sudbury, where signed documentation of their receipt is obtained. The samples are then shipped by courier for analysis to AGAT Laboratories in Mississauga Ontario. Duplicate samples and gold metalics were undertaken over selected zones of interest, in some cases by several different labs. Quality assurance and quality control will further be undertaken by third party consultants CCIC Caracle Creek International Consultants.

We seek Safe Harbour.

TRUECLAIM EXPLORATION INC.



John Carter, President

Phone: 905-302-3843

Fax: 1-888-686-1405

About Trueclaim Exploration Inc.

Trueclaim Exploration Inc. (TSX VENTURE: TRM) is an explorer and developer of precious metals projects with significant potential for near-term production and growth. Our projects are located in Canada, one of the most active and stable mining regions in the world. Our team is committed to unlocking mineral wealth for our shareholders by discovering, developing, and permitting precious metals assets to production. The Company's Scadding project consisting of approximately 36,525 acres represents one of the largest land packages in Northern Ontario. For additional information, please visit us at www.trueclaim.ca.

Neither the TSX Venture Exchange nor its Regulation Services Provider (as that term is defined on the policies of the TSX Venture Exchange) accepts responsibility for the adequacy or accuracy of this release.

Technical information in this news release has been reviewed by Mr. Bob Komarechka, P. Geo., acting as a consulting Project Geologist for the Company, and prepared in accordance with Canadian regulatory requirements as set out in National Instrument 43-101. Company Management, which takes full responsibility for content, prepared this news release. Some of the statements contained in this release are forward-looking statements, such as estimates and statements that describe the Company's future exploration and financing plans, objectives or goals, including words to the effect that the Company or management expects a stated condition or result to occur. Since forward-looking statements address future events and conditions, by their very nature, they involve inherent risks and uncertainties. Actual results in each case could differ materially from those currently anticipated in these statements. Such risks include expectations that may be raised by discussing potential mine types and by comparing the Company's projects to other projects. Also, in order to proceed with the Company's exploration and acquisition plans, additional funding is necessary and, depending on market conditions, this funding may not be forthcoming on a schedule or on terms that facilitate the Company's plans.